

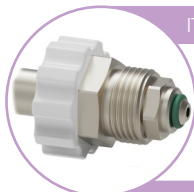
## Gas regulator fixed output with ball flowmeter



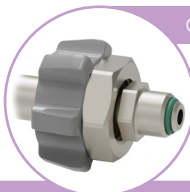
**Just Press F** regulators are specially designed for their use in hospital facilities with no oxygen piped network available, not recommended for care therapy services.

### Just Press F Features

- Piston gas regulators for its use on oxygen cylinders at 200 bar with a Spanish standard connector (*please consult our staff about other gases*).
- They incorporate a ball flowmeter, which is **360° twistable** to facilitate the measurements. Available with **4, 6 or 15 l/min** scales.
- They incorporate a double scale manometer (bar/psi) and color code, to read the pressure of the cylinder.



ITC EP-6



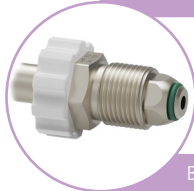
CGA V-1



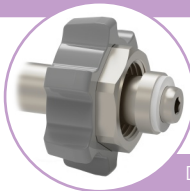
Pin-Index

### INLET CONNECTION STANDARDS

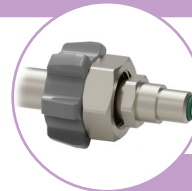
(Consult our staff about other standards)



BS 341-3



DIN 477-1



NF E29-116

### TECHNICAL SPECIFICATIONS

<b>Materials:</b>	Anodized aluminium, Polycarbonate, Polyamide, stainless steel and chromed brass
<b>Precision:</b>	± 10 %
<b>Maximum inlet pressure:</b>	200 bar
<b>Available flows:</b>	0 - 4 l/min (max < 8 l/min) 0 - 6 l/min (max < 10 l/min) 0 - 15 l/min (max < 25 l/min)
<b>Inlet standards:</b>	ITC EP-6, BS 341-3, DIN 477, ISO 5145, CGA V-1, NF E29-650, etc...
<b>Outlet connection:</b>	DISS 9/16" with a tubing nozzle for removable tube
<b>Point of design:</b>	4.5 ± 0.5 bar
<b>Calibration:</b>	101,3 kPa and 23 °C
<b>Dimensions:</b>	145 x 180 x 100 mm
<b>Weight:</b>	655 g
<b>Standards:</b>	In compliance with Directive 94/43/EEC In compliance with UNE-EN ISO 10524 In compliance with UNE-EN ISO 15002
<b>Classification:</b>	Class IIb